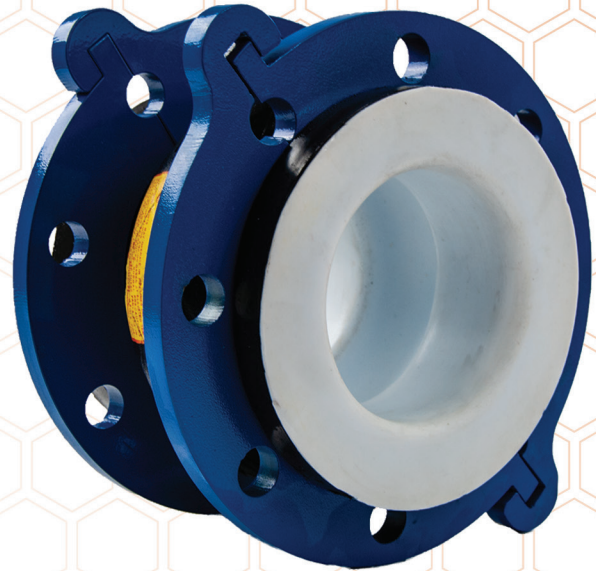


Secure-Flex™ Expansion Joints

Unaflex® rubber expansion joints provide relief from stresses caused by thermal expansion and contraction in pipelines.



Secure-Flex Style 7000 expansion joints are manufactured to non-standard face-to-face dimensions. Double and triple arch expansion joints are available for greater movement and reduced spring rates. Kadant Unaflex manufactures concentric and eccentric tapers, offset styles, and extended sizes. To accommodate a wide array of temperatures, the Secure-Flex Style 7000 expansion joints are available in an assortment of elastomer and reinforcement combinations, allowing temperatures up to 400°F.

Overview



Features

- Precision laser cut carbon steel flanges
- Powder-coated flanges
- Floating flange design
- PTFE lining available



Benefits

- Maximum durability
- Simplified installation
- Superior sealing
- Compensates for offset bolt holes and piping misalignment

Secure-Flex Expansion Joint 7001 Long Style Dimensions and Specifications

Nominal I.D. Sizes (Inch)	Standard Face-to-Face (Inch)	Outside Diameter	Bolt Circle Diameter	Bolt Hole Diameter	Number of Bolt Holes	Design Pressure-PSI	Vacuum In. Hg	Axial Compression	Axial Elongation	Lateral Deflection	Compression	Lateral	Elongation	Bolt Torque-Ft./Lbs.	Weight-Lbs.
1.5	6	5.00	3.875	0.625	4	250	26	1.25	0.75	0.75	170	135	225	30-50	10
2	6	6.00	4.75	0.750	4	250	26	1.25	0.75	0.75	225	170	280	30-50	11
2.5	6	7.00	5.50	0.750	4	250	26	1.25	0.75	0.75	280	210	347	30-60	12
3	6	7.50	6.00	0.750	4	250	26	1.25	0.75	0.75	335	250	414	40-70	13
4	6	9.00	7.50	0.750	8	250	26	1.25	0.75	0.75	450	365	552	40-70	17
5	6	10.00	8.50	0.875	8	250	26	1.25	0.75	0.75	560	450	688	40-70	20
6	6	11.00	9.50	0.875	8	250	26	1.25	0.75	1.00	700	530	826	40-70	23
8	8	13.50	11.75	0.875	8	250	26	1.25	0.75	1.00	755	590	919	50-75	31
10	8	16.00	14.25	1.000	12	250	26	1.75	0.75	1.00	950	730	1148	50-75	40
12	8	19.00	17.00	1.000	12	250	26	1.75	0.75	1.00	1150	870	1378	50-75	45
14	9	21.00	18.75	1.125	12	250	20	1.75	0.75	1.00	1150	870	1378	50-90	75
16	9	23.50	21.25	1.125	16	250	18	1.75	0.75	1.00	1150	870	1378	50-90	85
18	9	25.00	22.75	1.250	16	180	18	1.75	0.75	1.00	1285	980	1551	50-90	98
20	9	27.50	25.00	1.250	20	180	16	1.75	0.75	1.00	1430	1090	1720	50-100	115
24	10	32.00	29.50	1.375	20	180	16	1.75	1.00	1.00	1710	1315	2065	50-100	125

Notes:

1. Full vacuum construction is available, consult Kadant Unaflex.
2. For higher pressures than shown, consult Kadant Unaflex.
3. Control units (sold separately) must be used when piping is not properly anchored.
4. Safety Shields/Splash guards recommended.
5. When mating to FRP-fiberglass flat full face flanges, an elastomeric spacer gasket is required. This gasket will distribute the load evenly to the mating flange.
6. Ranges in the chart are recommended torque values. The amount of torque required is different for all applications. They can change depending on media, temperature, pressure, mating flange type and surface, material, and environmental conditions.
7. For multiple arches and HDPE piping sizes, please consult Kadant Unaflex.

Dimensions are for reference only and subject to change.